

# Welcome to the Balm-Boyette Scrub & Triple Creek Nature Preserves

---

The 4933-acre Balm-Boyette Scrub Nature Preserve was purchased through joint funding from Hillsborough County's Environmental Lands Acquisition and Protection Program (ELAPP) and the State of Florida's Conservation and Recreational Lands Program.

Balm-Boyette Scrub Nature Preserve is a rarity due to the large area of undisturbed upland habitat that it contains, especially the rare scrub habitat. Natural habitats within the site include sand pine scrub, xeric oak scrub, pine flatwoods, hardwood hammock, wet prairie, freshwater marsh, cypress swamp, and hardwood swamp. Restoration of scrub habitat near the hiking trail is currently underway.

Many protected species of plants and animals have been documented on the site, including Florida golden aster, Curtiss' milkweed, Eastern indigo snake, Sherman's fox squirrel, Florida sandhill crane, Southeastern American kestrel, and gopher tortoise.

Triple Creek Preserve adjoins Balm-Boyette Scrub's north boundary. Just over 2 miles of hiking trails have been added here linking to the Balm-Boyette trail. In the future, a second parking area will be added at the "Deuces R Wild" gate at 13299 Balm-Boyette Rd.

Triple Creek got its name from the three

creeks that run through portions of the property—Bell Creek, Boggy Creek, and Fish Hawk Creek, all of which flow into the Alafia River.

The 971-acre preserve has a mix of wetland and upland habitat types, including pine flatwoods, wetland forests, and improved pasture areas. It is home to many rare species of plants and animals including flakelet fern and grass-pink orchids.

Triple Creek was jointly purchased by ELAPP and the Florida Communities Trust. Guided tours of the site are offered through the Conservation Services office.

## Prescribed Fire

One of the land management techniques used on the preserves is prescribed burning. This practice is important in maintaining fire-dependent ecosystems such as pine flatwoods. Prescribed fire maintains and in many cases increases species diversity in areas where it is applied. It also helps prevent dangerous wildfires by reducing fuel loads. During prescribed burns, wildfires, or other emergencies, the preserve may be temporarily closed. Call the Conservation Services office for more information.

## For further information, contact:

Hillsborough County  
Parks, Recreation and Conservation  
Department

Conservation Services  
10940 McMullen Road

Riverview, FL 33569-6226

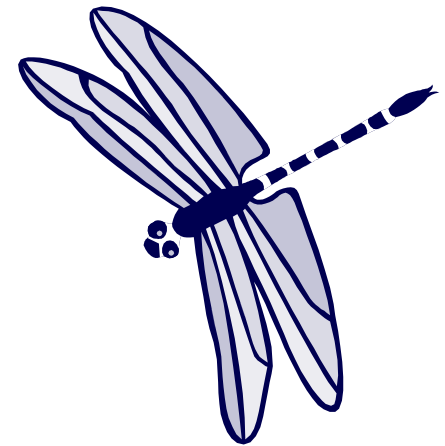
Tel: 813.672.7876 Fax: 813.672.7880

[www.hillsboroughcounty.org/parks](http://www.hillsboroughcounty.org/parks)

The Hillsborough County Parks, Recreation and Conservation Department is an Equal Opportunity agency and offers all persons the benefits of participating in each of its programs and competing in all areas of employment regardless of race, color, religion, sex, national origin, age, handicap, or other non-merit factors.

# BALM-BOYETTE SCRUB & TRIPLE CREEK NATURE PRESERVES

Lithia, FL

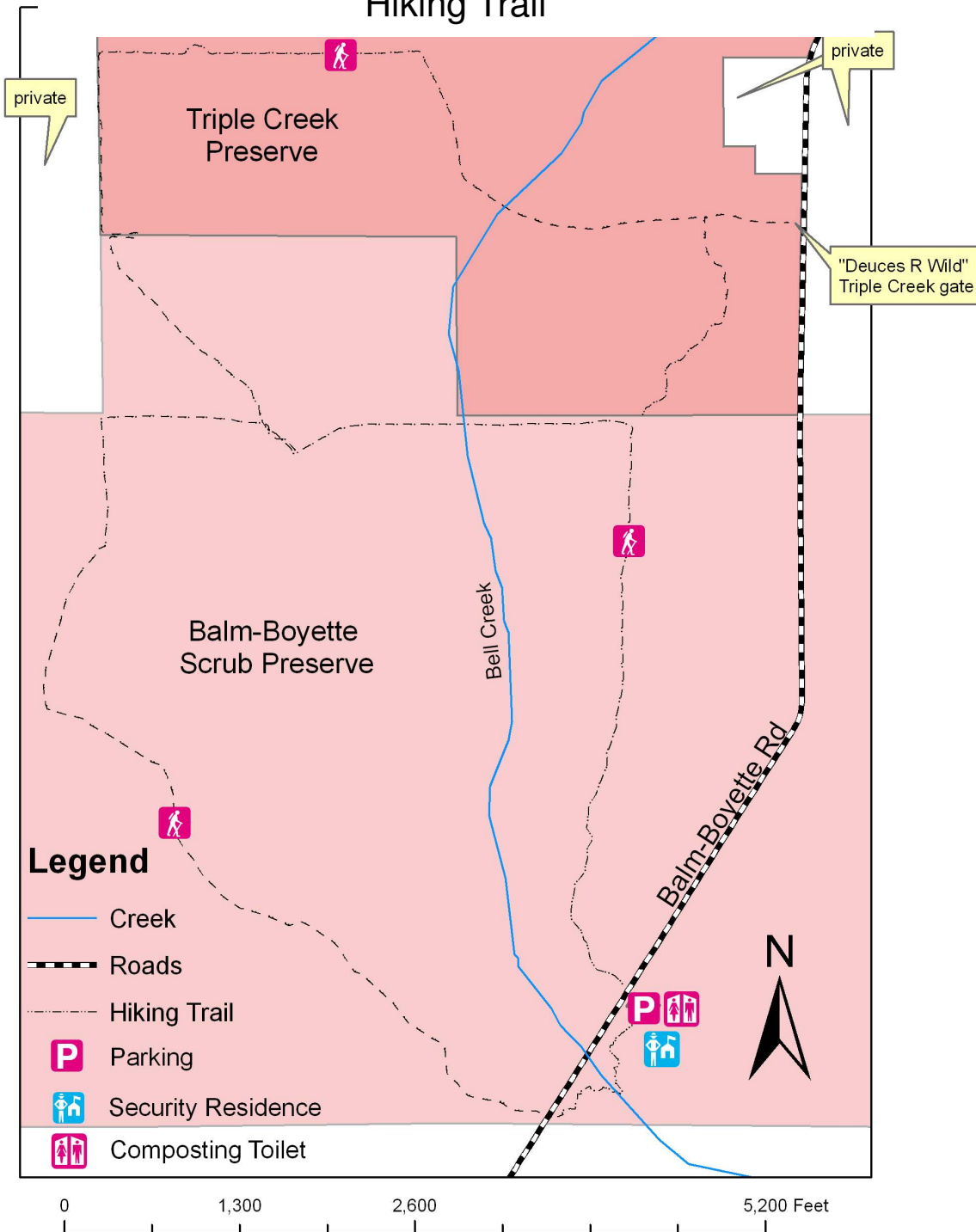


## Hiking Trail Guide



Parks, Recreation and  
Conservation Department

# Balm-Boyette & Triple Creek Hiking Trail



## Preserve Rules:

- Hours: sunrise to sunset
- Remove all garbage from the site
- Dogs must be on hand-held leashes
- Unauthorized vehicles, horses, and bikes are prohibited
- No swimming
- No firearms or paintball
- No digging, fires, or overnight camping
- **All plants & animals are protected** (Hillsborough County Ordinance 97-14)

## Note: Biking is not permitted on this trail.

18 miles of mountain biking trails are available beginning at the parking lot across the street from the hiking trail. A map of the bike trail is available from SWAMP bike club ( [www.swampclub.org](http://www.swampclub.org) ) or from the Conservation Services office.

## Safety Guidelines for Hikers:

- Bring a compass.
- Drink plenty of water.
- Wear insect repellent and sunscreen.
- Be very careful crossing Balm-Boyette Rd.
- The preserve may be temporarily closed in case of wildfire, prescribed burn or other emergency.

## DIRECTIONS:

**Parking area address: 13998 Balm-Boyette Rd, Lithia FL 33547**

- From I-75, take exit 246, Big Bend Rd (CR 672). Go east on Big Bend Rd (CR 672) to US 301.
- Turn right on US 301. Continue south for 1.5 miles to Balm Rd (CR 672).
- Turn left at Balm Rd (CR 672). Continue east for 5.2 miles to Balm-Boyette Rd.
- Turn left on Balm-Boyette Rd. Continue north for 1.3 miles to parking lot on right (east) side.

**Triple Creek "Deuces R Wild" gate address: 13299 Balm-Boyette Rd, Lithia 33547** (future parking area)

Composting toilet facilities located in parking lot. Kiosks mark the bike and hiking trail heads. Site is patrolled by live-on security.

## Total trail length = approx 6 miles

Special thanks to the volunteers from AmeriCorps and the Boy Scouts who helped to construct and mark the trail.

# Welcome to the Balm-Boyette Scrub Nature Preserve

---

The 4933-acre Balm-Boyette Scrub Nature Preserve was acquired by Hillsborough County beginning in March of 1992 through its Environmental Lands Acquisition and Protection Program. A portion of the preserve has been conveyed to the State of Florida through the Conservation and Recreational Lands Program.

Natural habitats within the preserve include sand pine scrub, xeric oak scrub, pine flatwoods, hardwood hammock, wet prairie, freshwater marsh, cypress swamp, and hardwood swamp. The east end of the preserve includes a 1200-acre area that was mined for phosphate over a period of time starting in the 1950s, and which now consists of improved pasture and numerous lakes.

Many protected species of plants and animals have been documented on the preserve, including Florida golden aster, Curtiss' milkweed, Eastern indigo snake, Sherman's fox squirrel, Florida sandhill crane, Southeastern American kestrel, and gopher tortoise. Nesting boxes have been

mounted along the bike trail to provide additional habitat for kestrels and bluebirds.

The mountain bike trail, which was built and is maintained by the SouthWest Association of Mountain-bike Pedalers (SWAMP) has approximately 6 miles of easy double-track, ten miles of intermediate single-track, and two miles of technical berm trail along lakes.

## Prescribed Fire

One of the land management techniques used on the preserves is prescribed burning. This practice is important in maintaining fire-dependent ecosystems such as pine flatwoods. Prescribed fire maintains and in many cases increases species diversity in areas where it is applied. It also helps prevent dangerous wildfires by reducing fuel loads. During prescribed burns, wildfires, or other emergencies, the preserve may be temporarily closed. Call the Conservation Services office for more information, or visit the web site.

## For further information, contact:

Hillsborough County  
Parks, Recreation and Conservation  
Department  
Conservation Services  
10940 McMullen Road  
Riverview, FL 33569-6226  
Tel: 813.672.7876 Fax: 813.672.7880  
[www.hillsboroughcounty.org/parks](http://www.hillsboroughcounty.org/parks)

The Hillsborough County Parks, Recreation and Conservation Department is an Equal Opportunity agency and offers all persons the benefits of participating in each of its programs and competing in all areas of employment regardless of race, color, religion, sex, national origin, age, handicap, or other non-merit factors.

# BALM-BOYETTE SCRUB NATURE PRESERVE Lithia, FL



## Mountain Bike Trail Guide



Parks, Recreation and  
Conservation Department

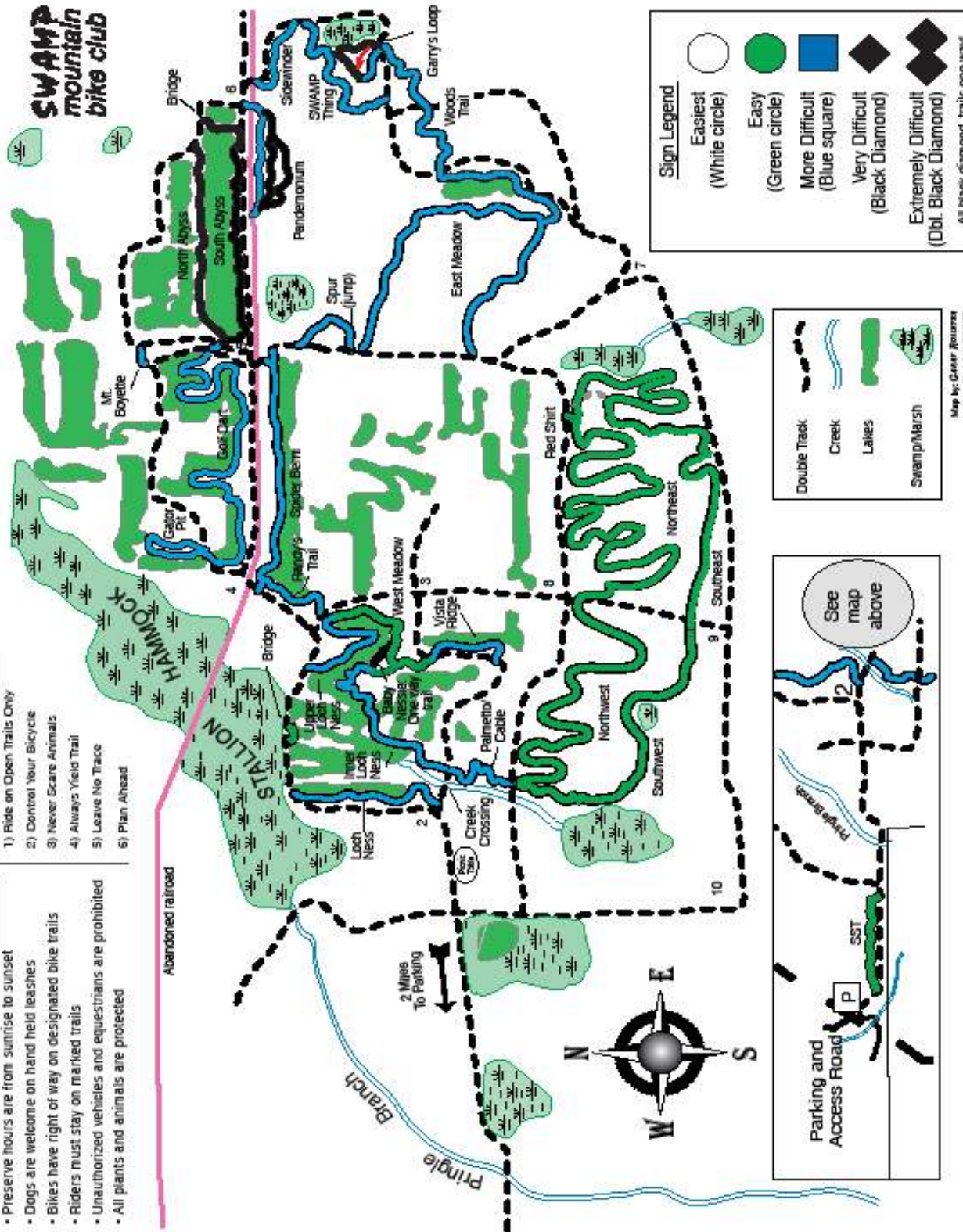


### Balm Boyette Nature Preserve Rules

- Preserve hours are from sunrise to sunset
- Dogs are welcome on hand held leashes
- Bikes have right of way on designated bike trails
- Riders must stay on marked trails
- Unauthorized vehicles and equestrians are prohibited
- All plants and animals are protected

### IMBA Rules of the Trail

- 1) Ride on Open Trails Only
- 2) Control Your Bicycle
- 3) Never Scare Animals
- 4) Always Yield Trail
- 5) Leave No Trace
- 6) Plan Ahead



### Preserve Rules:

- Hours: sunrise to sunset
- Remove all garbage from the site
- Dogs must be on hand-held leashes
- Unauthorized vehicles and horses are prohibited
- Riders must stay on marked trails
- Bikes have right-of-way on designated trails
- No swimming
- No firearms or paintball
- No digging, fires, or overnight camping
- **All plants & animals are protected** (Hillsborough County Ordinance 97-14)

### Safety Guidelines for Bikers:

- Wear a helmet.
- Be sure to bring:
  - plenty of water
  - a spare tube and other repair items
  - a small first aid kit
  - sunscreen
  - insect repellent
  - a compass
  - a trail map
- Check map before beginning ride, taking note of directions in and out and distance.
- The preserve may be temporarily closed in case of wildfire, prescribed burn or other emergency.

### DIRECTIONS:

- From I-75, take exit 246, Big Bend Rd (CR 672). Go east on Big Bend Rd (CR 672) to US 301.
- Turn right on US 301. Continue south for 1.5 miles to Balm Rd (CR 672).
- Turn left at Balm Rd (CR 672). Continue east for 5.2 miles to Balm-Boyette Rd.
- Turn left on Balm-Boyette Rd. Continue north for 1.3 miles to parking lot on right (east) side.

**Preserve address: 13998 Balm-Boyette Rd, Lithia FL 33547**

Composting toilet facilities located in parking lot. Kiosks mark the bike and hiking trail heads. Site is patrolled by live-on security.

**Total trail length = approx 18 miles**  
Special thanks to the SWAMP mountain bike club for the years of dedicated service in building and maintaining the trails.